



# VEXO110

## 10" high performance 2-way loudspeaker

### Highlights:

- DuraCoat™ texture paintwork
- High sound pressure levels with tight driver response
- Ball impact resistance
- Horizontal and vertical mounting
- User friendly mounting
- -90° to +35° inclination
- 70V/100V transformer optionally available

The VEXO series are compact high performance 2-way loudspeakers and come in 3 different models, each of them with different sizes and performances meeting the requirements of every application. The VEXO series loudspeakers consist of active and passive versions. The low-frequency transducer, which is made out of high-quality materials, is combined with a 1.7" voice coil compression driver, enabling high sound pressure levels and a tight driver response with a rotatable 90° x 70° coverage pattern for a wide range of applications.

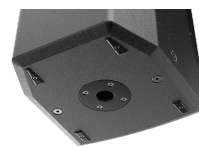
Thanks to the unique driver composition, the VEXO110 delivers a clear and natural sound with an RMS power of 300 Watts and a maximum power of 1200 Watt. The frequency response ( $\pm 3\text{dB}$ ) starts from 65Hz up to 20 kHz and the sensitivity (1W/1m) reaches 96dB while a maximum continuous sound pressure level from 121dB can be achieved.

When not in use, the active versions of the VEXO series devices automatically go into an energy-saving standby mode. This means that active versions can also be used in fixed installations, as there is no need to physically shut them down after each use.

Using an optional 70V/100V line transformer enables the VEXO series to be used in 70V or 100V systems. By removing the backplate and replacing it with a 70V/100V backplate on which the module is integrated, the high-performance loudspeaker is able to apply in a 70V/100V system.

The construction of the cabinets is made of 15 mm plywood with a polyurethane coating, making them resistant to any impact. The front side of the cabinet is finished with a powder-coated steel grill with acoustical foam. A recessed carry handle on the rear side makes carrying easy. Positioning and suspension of the speaker are easily achieved by using the standard 35 mm pole adapter on the bottom and the M10 rigging points. Two speaker connectors provide reliable connections with easy link-through to cabinets.

The optional Clever U bracket allows mounting the high power 2-way cabinet both horizontally and vertically. An inclination of -90° to +35° ensures an optimal positioning. The optional MBK bracket even allows mounting the VEXO series to the ceiling which gives the opportunity to install the loudspeaker cleanly in any environment.



### Impedance:



## Applications:

---

- Bars, restaurants
- Clubs, discotheques
- Live performances

## System specifications:

---

Speaker type		2-way
Max. Power		1200 W
RMS Power		300 W
Impedance		8 $\Omega$
Sensitivity (1W/1m)		96 dB
Sound Pressure (Max. W/1m)		121 dB
Frequency	Response ( $\pm$ 3 dB)	65 Hz - 20 kHz
Crossover	Type	Passive built-in
Dispersion	Horizontal	90°
	Vertical	70°
Drivers	HF	Compression driver with 1.7" VC and 1" throat
	LF	10" (2" VC)
Connectors		2 x Speakon compatible (Linkthrough)

## Product Features:

---

Dimensions		329 x 540 x 345 mm (W x H x D)
Weight		16.8 kg
Construction		15 mm high-quality plywood
Finish	Cabinet finishing	Polyurethane coating
Front finish		Powder coated steel grill with acoustical foam
Mounting & handling	Rigging points	10 x M10
	Stand fitting	35 mm pole adapter on bottom
	Carry handles	On top
Powerdrive mount		Powerdrive type 75 (108 x 50.8 mm)
Colours		Black & White
Accessories	Optional	70V/100V transformer module

## Variants:

---

- VEXO110/B - Black version
- VEXO110/W - White version

## Architects' and Engineers' Specifications:

---

The loudspeaker cabinet must be a 10" 2-way system. The cabinet must be constructed of 15 mm high-quality plywood with a durable impact proof Polyurethane coating. The front side must be finished with a powder coated steel grill which is lined with an acoustical foam.

The cabinet must have a recessed carry handle on the rear side of the cabinet for easy handling, while a standard 35 mm pole adapter and 10 x M10 rigging points must be provided for positioning and suspension of the speaker.

The loudspeaker cabinet must have an RMS power handling of 300 Watt with a maximum power handling of 1200 Watt. The frequency response ( $\pm 3$  dB) must range from 65 Hz to 20 kHz. The sensitivity must be 96 dB when measuring with an input signal of 1 Watt at a distance of 1 meter, while the maximum continuous sound pressure level must reach 121 dB.

The loudspeaker must consist of a HF compression driver with 1.7" VC and 1" throat and a 10" low frequency loudspeaker. It must have an impedance of 8 Ohm.

The complete model is constructed of high-quality components. It must also have an integrated tweeter overload protection circuit.

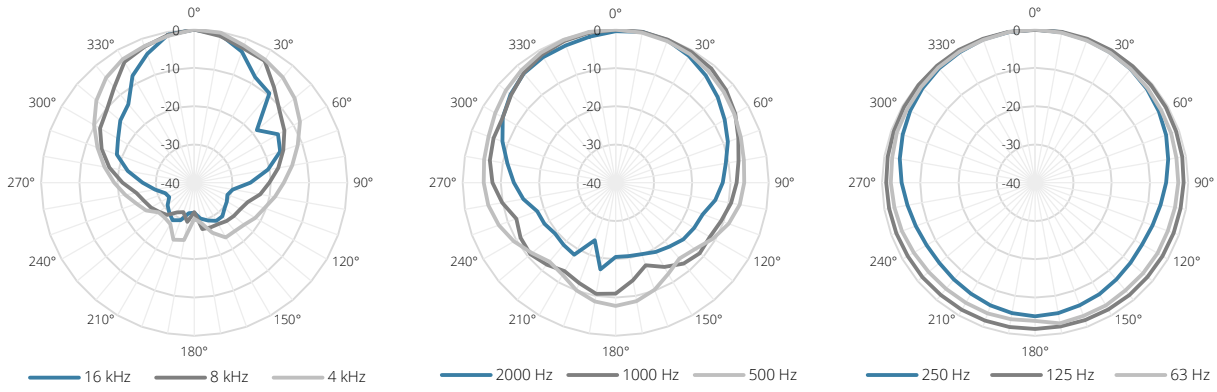
The horn mounted on the HF driver must have a horizontal dispersion of 90° and a vertical dispersion of 70° and must be rotatable, allowing both horizontal and vertical use.

Connections with the speaker must be made using 2 x speakon compatible connectors, allowing easy connection and link-through. The loudspeaker cabinet must not exceed a width of 329 mm, a height of 540 mm and a depth of 345 mm. Its weight must not exceed 16.8 kg.

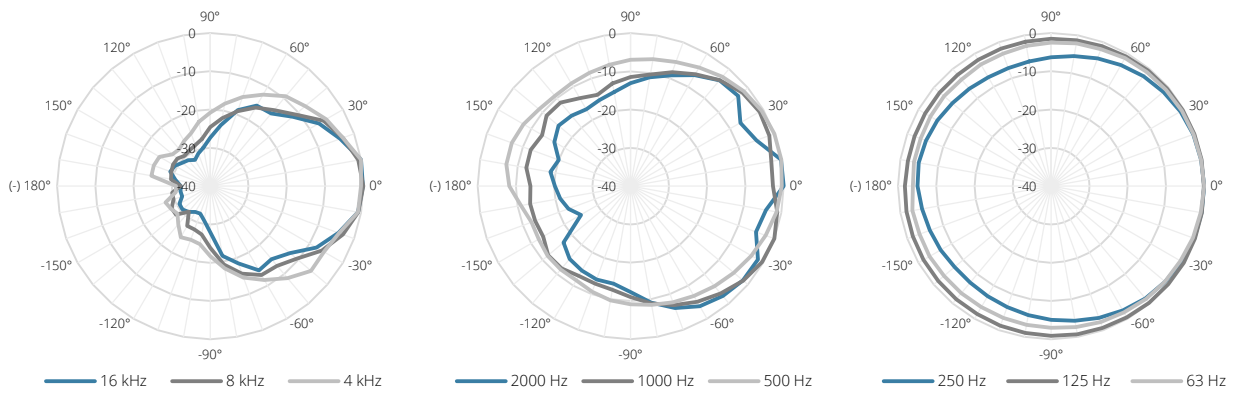
A 70V/100V transformer must be optional so the loudspeaker can be used in 70V or 100V systems.

# Acoustical data graphs:

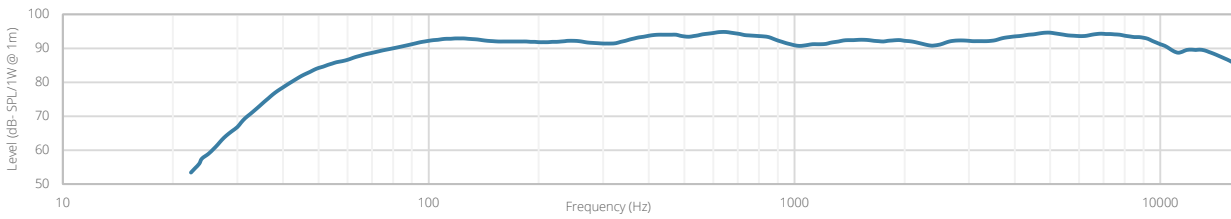
## Horizontal Polars:



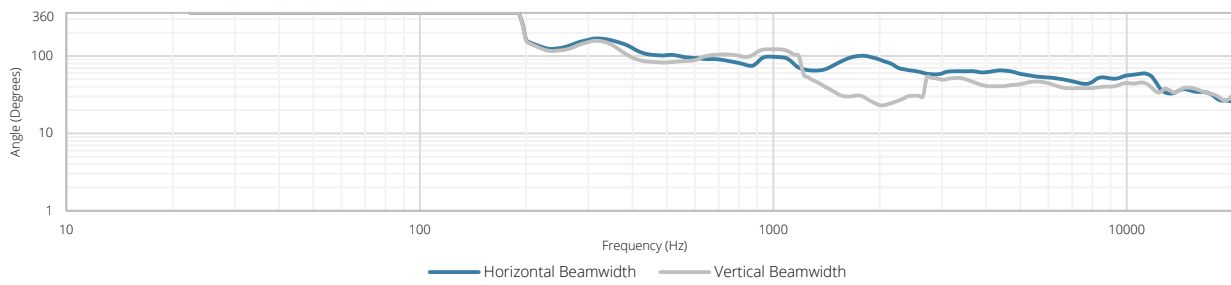
## Vertical Polars:



## Sensitivity:



## Beamwidth (-3dB):



## Directivity index:

